



# SMART BUILDINGS

Innovative workplaces that drive increased efficiency, productivity and occupant satisfaction



# SMART BUILDINGS: UNLOCKING THE POWER OF YOUR PEOPLE

Typically, the two largest expenditures for a business are its people and its real estate; and these two things are inherently connected. Today's workforce demands flexible, more collaborative working conditions and in a work place that meets their productivity needs. Yet as smart people accelerate their growth and embrace new ways of working, the buildings they work in are often lagging behind.

But smart technologies are bringing rapid, positive changes. For many organizations, the true benefit of a Smart Building is a more satisfying customer experience, higher employee productivity, satisfaction and well-being.

Whether you are looking to bring incremental improvement to an existing facility or want to ensure a new building project meets the exacting requirements of its future occupants, ExcelRedstone has a solution. As an acknowledged market leader in Smart Building enablement, ExcelRedstone continually optimises IT infrastructure and deploys smart building technologies to transform buildings into smarter, connected workplaces.

**70%**

of workers feel that offering flexible working makes a job more attractive to them\*

**79%**

of Millennials say their work environment is more important than their salary\*

**57%**

of employees expecting to be working in a smart office within the next 5 years\*

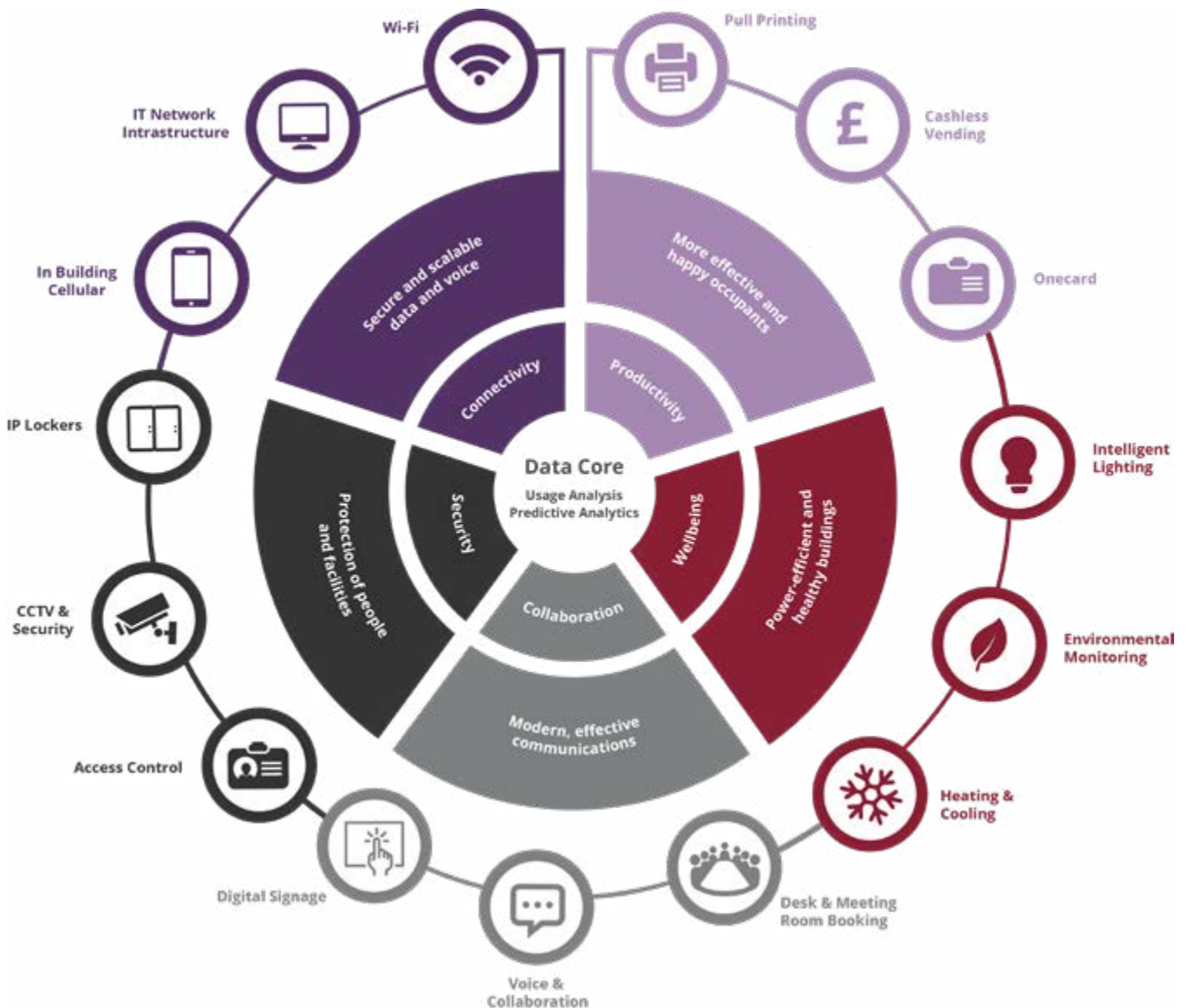
**39%**

of employees claim their organisation's culture does not support well-being\*

# SMART BUILDING TECHNOLOGIES

The Smart Building isn't a new phenomenon, but it is made more agile by improvements in the technology solutions deployed and the convergence onto the central network.

This technology brings direct benefits to a building and its occupants, but where they can really deliver added value is the data they provide. This data core – with data from across your real estate – can provide powerful understanding of how your buildings have operated in the past, are performing at this exact moment, and what your organisation will need in the future.



## Connecting the Smart Building



### **Wi-Fi**

In today's workplace, there is an expectation from staff and visitors alike that reliable Wi-Fi should be available to all. ExcelRedstone provides a wireless network platform for enabling enterprise-wide access to an organisation's applications and data, allowing users to take the office with them wherever they go.



### **IT network Infrastructure**

A secure, converged IP infrastructure that uses real-time information across building systems to centrally manage resources, enables greater risk management and increases overall performance.

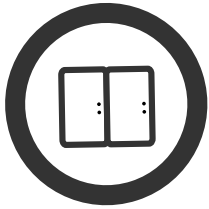


### **In Building Cellular**

While one person in one part of the building may have strong, consistent coverage – others may be getting no coverage at all. For companies wanting to improve productivity and potentially move to a “mobile-first” strategy, it's vital to understand and improve connectivity within your building. Our revolutionary In Building Cellular solutions deliver constant, reliable coverage across all networks, for staff and visitors alike.



## Securing the Smart Building



### IP Lockers

Intelligent Lockers are increasingly used in the Smarter Office giving staff secure storage. They are also particularly pertinent in workplaces that are increasingly adopting flexible 'hot desking' space. Facilities managers can gain detailed visibility on locker usage and utilisation - whether that's how much capacity is used at peak times, or who is occupying but has not accessed a locker for a set time. As lockers use existing access cards, there is no risk of access to lockers through the loss of keys and copying of keys is also prevented.



### CCTV & Security

Running surveillance or CCTV cameras - wireless or wired - over an IP network brings multiple benefits and savings, offering far more flexibility to safeguard people, protect property and mitigate risk, 24/7. With the right network capacity, the latest high-definition (HD) surveillance cameras, digital video recorders and video management systems (VMS) deliver consistently fast performance, resilience and high-quality images that are easy to retrieve, store and manage.



### Access Control

Access control systems over IP can secure your facilities and offer easy ongoing management, allowing people to proceed to restricted areas based on the credentials they present. Access Control Systems have become necessary for most businesses. Large or small, companies need to protect their facilities, data, and personnel.



## Collaborating within the Space



### Digital Signage

Audio visual technologies can immediately save a company money through less travel and enable staff to be more efficient therefore less time wasted. Great audio visual systems can help boost productivity. From using screens to showcase targets, or key messages, teams can feel more motivated and therefore increase efficiency and ultimately productivity.



### Voice and Collaboration

ExcelRedstone is able to offer end-users access to real-time voice and collaboration tools, including the use of traditional desktop telephones, video, instant messaging and real-time file sharing facilities; whether you are looking to increase your operational agility, respond faster to changing needs of the business, or improve productivity.



### Desk and Meeting Room Booking

DeskQUERY™ is a groundbreaking workspace analysis and desk utilisation toolkit designed to give businesses the information they need to understand, rationalise and manage their use of space. This seamless, low-intervention and unobtrusive software solution accurately monitors utilisation of desks, meeting rooms and other facilities in real time, offering powerful additional functionality designed to empower workspace users and drive operational efficiency.



## Improving Well Being



### **Intelligent HVAC**

Building occupants and owners don't want to waste time fiddling with the heat or air conditioning, so smart HVAC systems "learn" where and how much heat or air to bring to each section of the building. Intelligent HVAC (Heating Ventilation and Air Conditioning) can lead to an improved working environment for the occupants while reducing the energy consumption, carbon emissions and importantly, cost.



### **Environmental Monitoring**

Environmental matters are rising up the boardroom agenda – both complying with legislation and meeting customers' expectations on corporate responsibility. With government commitments to reduce emissions and increasingly stringent environmental regulations on buildings, facilities need to work smarter than ever before. Utilising Intelligent lighting and HVAC systems, Smart buildings can adapt to user requirements, even shutting down entire areas or floors as demand allows, reducing cost impact significantly. You can also monitor environmental health within the building, for example air pollution, to ensure it is safe for occupants.



### **Intelligent Lighting**

Connected, Intelligent lighting systems can precisely manage the lighting in a premises with a combination of control strategies, allowing you to deliver the optimum light levels for performing tasks safely and effectively. By integrating luminaires with sophisticated controls and comprehensive management systems, you can streamline business activities while saving energy and ensuring employee satisfaction.





## Increasing Productivity



### **One Card**

OneCard avoids the complication of multi access cards and provides a single universal access to many systems and applications. This approach, when deployed within the Smart Building environment offers significant benefits both to a building's owner and its occupants; from convenience through to enhanced safety. Where an organisation has multiple facilities located nationally or internationally, OneCard can provide a common solution that is managed from a central site or multiple locations.



### **Cashless Vending**

We have become increasingly reliant on smart cards (such as the Oyster card) and contactless payment, but this often requires us to carry multiple cards for different payment purposes. The OneCard single card system avoids this complication and provides single card access to many systems and applications within the Smart Building environment, including convenient access to cashless vending machines.



### **Pull printing**

Printing in commercial buildings can be very wasteful, sending files to the wrong printers or leaving uncollected print jobs. Pull Printing works with access control cards, ensuring that print jobs are only released once the user swipes their access card at the printer. This system safeguards printouts for security of sensitive documents but also significantly reduces waste and costs.

\* PowWowNow

\*Accenture, Workforce of the Future Study

\*British Council for Offices

\*Dell Future Workforce



# ABOUT EXCELREDSTONE

ExcelRedstone is a recognised provider of IT infrastructure and Managed Services Support with over 30 years' experience designing, building optimising and supporting data centres, smart buildings, workplaces and cloud-based solutions. In addition, the company provides many specific solutions for Wi-Fi & IP network connectivity, physical and electronic security, audio-visual systems and office space and occupancy optimisation software.

With over 500 employees and a global capability, ExcelRedstone solutions are deployed in some of the world's largest data centres, intelligent buildings and work spaces. The company has an enviable reputation for best in class service and delivery within the industries they serve, including IT, finance, enterprise and multi-site campuses due to their flexible and agile nature in supporting client contracts.

## Contact Us

If you would like to know more about Smart Buildings, contact our dedicated team today on +44 (0) 20 3929 9915, or email us at [sales@excelredstone.com](mailto:sales@excelredstone.com)