



DESKQUERY™ WORKSPACE UTILISATION

Unlock new levels of real estate efficiency and cost saving with DeskQUERY™ from ExcelRedstone



DESKQUERY™ INTRODUCTION

DeskQUERY™ is a seamless, low-intervention and unobtrusive software solution which accurately monitors and highlights real-time usage of space in a clear and concise manner, providing an unequalled clarity of management information in support of ever-more sophisticated real estate strategies.

DeskQUERY™ can be deployed globally and provide real time data to Property/Facility Managers that enables them to fully understand the usage of their buildings which in turn can drive optimisation strategies to either contract their real estate footprint and realise cost savings or make informed decisions with regards to forecasted headcount growth.

By operating on existing corporate IT infrastructures, DeskQUERY™ offers significant advantages over existing hardware based products.

Through accurately monitoring real time desk utilisation across hours, days, weeks, months and even years, DeskQUERY™ can easily identify under or over-utilisation of work areas, floors or buildings and by delivering the data through easy-to-interpret graphical interfaces and bespoke reports, the software quickly and simply opens the door to significant real estate savings, allowing clients to make informed decisions across national or global estates.

As a result of monitoring and assessing space utilisation across a floor, a building or a group of buildings, DeskQUERY™ can support the most sophisticated levels of spatial planning and optimisation strategies.

DeskQUERY™ can drive optimisation strategies for existing locations, improve the accuracy of future expansion strategies or even create efficiencies through improved approaches to hot desk booking.



The key features and benefits are:-



Real-Time desk and Meeting Room utilisation monitoring that can measure utilisation by desk, by user and significantly by department



Savings can be achieved across multiple business streams including Real Estate, Security and IT thereby increasing the ROI



Suitable for use in both traditional fixed desk and hot-desking office environments



Sensor technology included for areas such as meeting rooms where PC's are not prevalent



Ability to provide information on virtual, remote and home based users



Quick speed of deployment with installation and roll out typically completed in under two weeks



Low cost as the low-intervention and unobtrusive solution resides on customers' existing infrastructure



Produces significant advances in terms of detail, accuracy, and granularity vis-à-vis existing solutions, (e.g. surveys and desk sensors) resulting in the ability to provide informed decision making across national or global estates



OUTCOMES AND VALUE ADD

DQ captures evidential data that can significantly affect strategic decisions:

Real Estate – the data captured will inform client's of their true utilisation, which can change predetermined views about lack of available workspace. A media client had planned to take a new building, as they felt that additional space was required to accommodate their people. Following a deployment of DQ and a review of 3-6 months, the data informed the Property Team that they had no need to take on a new building, resulting in cost avoidance of circa £6m p.a.

Real Estate – data captured through DQ for a client has informed Property Team that it's possible to exit buildings earlier than planned and close buildings. In one instance exiting of particular building saved approx. £20M+ per year.

Out Of Hours Working – offices often remain 'live' despite it being the weekend, so data captured on quantity of users over a number of weekends can help inform organisations to plan consolidated space for weekend working. Benefits include reduced energy costs, manageability of lone-working (Health & Safety) and general reduction in building costs.

Workplace Strategies – understanding when and how much people are using their workspace feeds into new Workplace Strategies that organisations are creating. A financial services client was looking to implement new flexible working policy to enable business strategy of real estate cost reduction, by encouraging users to work in a more flexible and agile way. In support of this programme, the Workplace Change Team required data on workspace utilisation to inform the development of their Workplace Transformation plan. Remote Working had already been adopted within the organisation, but the workplace team needed to understand patterns & trends of when people came to the office and plan how to change behaviours.



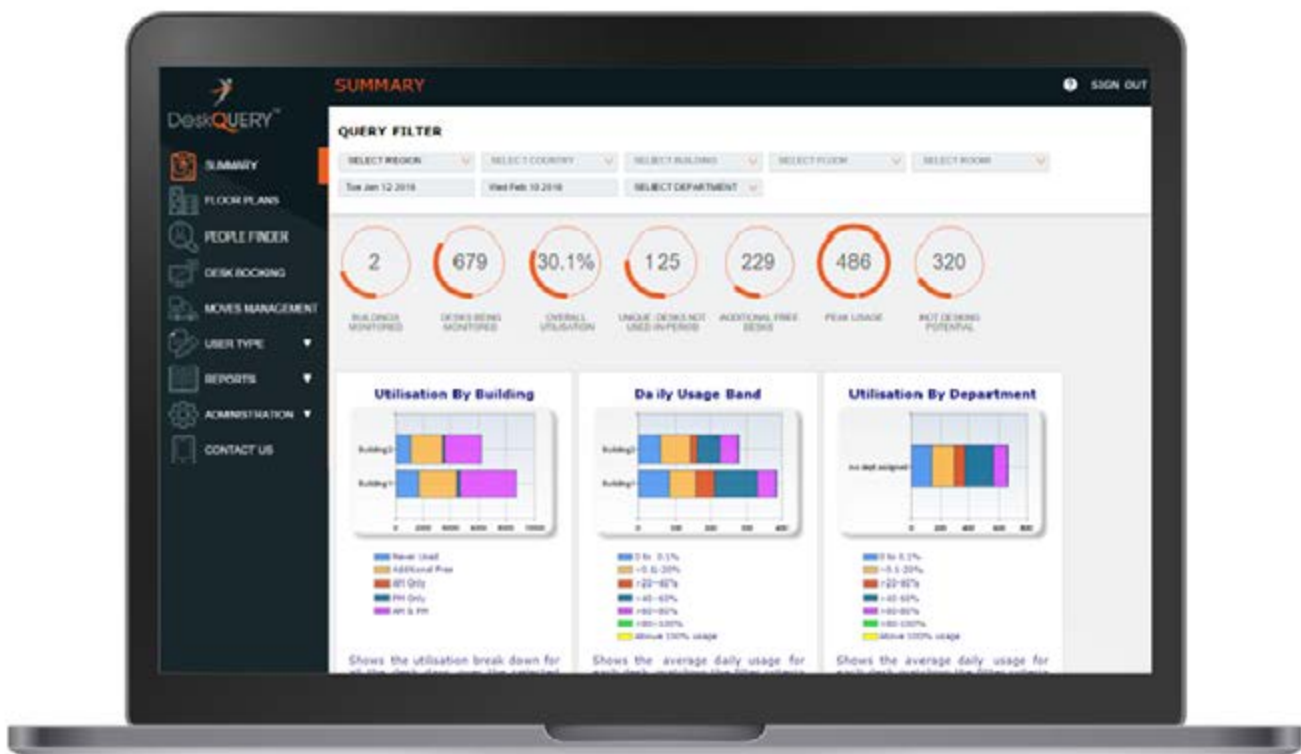
DESKQUERY™ DASHBOARD

Below you will see the main dashboard screen that consists of a number of elements including a site summary, utilisation charts and a navigation bar allowing access to other areas of the system such as FXSpace elements, reports and administrative tasks.

This is accessible for the key operators and users of the solution.

The summary charts provide a breakdown of the usage statistics based on the following criteria. Hovering the pointer over any of the chart elements will provide numerical tooltips for each section. In addition, the output of each chart can be exported to a CSV file by clicking the Export to CSV button.

- Utilisation by Building
- Daily Utilisation Band
- Utilisation by Department





The overall site summary consists of the following statistics:

- ✓ Buildings monitored – The Number of Buildings DeskQUERY is monitoring
- ✓ Desks being monitored – Total number of desks selected to be monitored
- ✓ Overall utilisation – The Utilisation of desks average over the last 30 days
- ✓ Unique desks not used in a period – Desks that weren't used in the past 30 days
- ✓ Peak usage – The peak number of desks utilised within the last 30 days
- ✓ Additional free desks – this is the average desks that are also available every day in the period in addition to those unique desks not used
- ✓ Peak usage – The peak number of desks utilised within the last 30 days
Hot desking potential – An aggregation of desks considering AM Usage / PM Usage / Non Usage vs. Availability

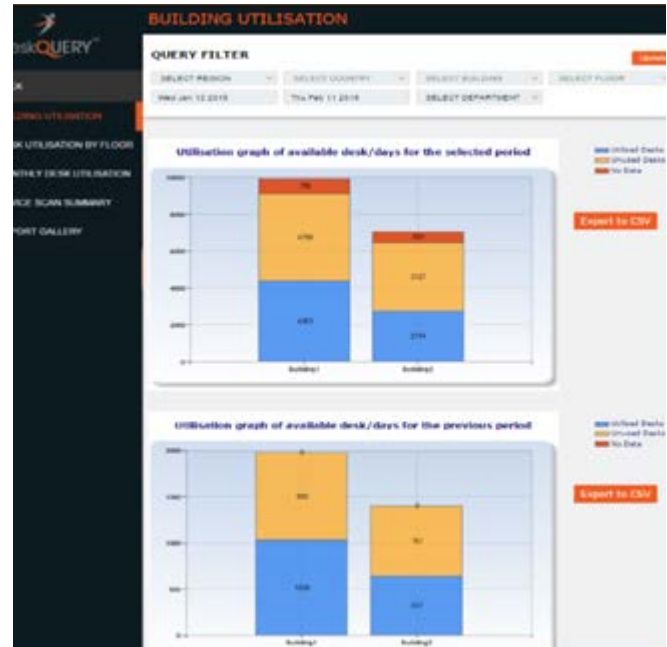
These figures can be filtered further by altering the Query Filter categories by their respective dropdown lists, which dynamically alter the charts and gauges with each selection.

DESKQUERY™ REPORTING

There are four core reports covering Building Utilisation, Desk Utilisation by Floor, Monthly Desk Utilisation and Device Scan Summary. In addition, the Report Gallery provides query based reports for DeskScan, DeviceScanDetail and DeviceScanSummary.

Building Utilisation

Filterable chart showing available desk/days for each building over the selected period, as well as a chart of the previous month's figures. The output of each chart can be exported to a CSV file by clicking the Export to CSV button.



Monthly Desk Utilisation Filterable pie chart detailing the desk utilisation percentage based on selection criteria. The output of the chart can be exported to a CSV file, as above.

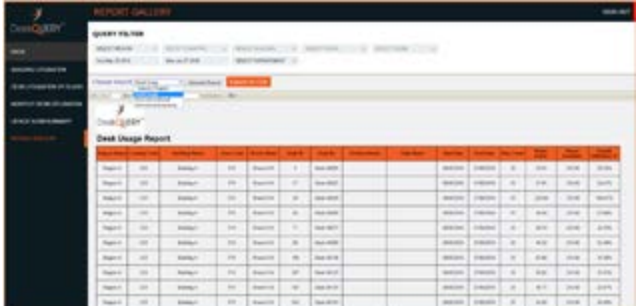


Device Scan Summary

Filterable summary of device scan rates including bar charts for scans per building and daily scan success percentages. The output of the chart can be exported to a CSV file, as above.

Report Gallery

Filterable text based reports for DeskUsage, DeviceScanDetail and DeviceScanSummary. The output of the reports can be exported to Excel, PDF or Word.



Building	Device	Location	Date	Usage	...
Building 001	Device 001	Location 001	2016-01-13	100	...
Building 001	Device 001	Location 001	2016-01-14	100	...
Building 001	Device 001	Location 001	2016-01-15	100	...
Building 001	Device 001	Location 001	2016-01-16	100	...
Building 001	Device 001	Location 001	2016-01-17	100	...
Building 001	Device 001	Location 001	2016-01-18	100	...
Building 001	Device 001	Location 001	2016-01-19	100	...
Building 001	Device 001	Location 001	2016-01-20	100	...
Building 001	Device 001	Location 001	2016-01-21	100	...
Building 001	Device 001	Location 001	2016-01-22	100	...
Building 001	Device 001	Location 001	2016-01-23	100	...
Building 001	Device 001	Location 001	2016-01-24	100	...
Building 001	Device 001	Location 001	2016-01-25	100	...
Building 001	Device 001	Location 001	2016-01-26	100	...
Building 001	Device 001	Location 001	2016-01-27	100	...
Building 001	Device 001	Location 001	2016-01-28	100	...
Building 001	Device 001	Location 001	2016-01-29	100	...
Building 001	Device 001	Location 001	2016-01-30	100	...
Building 001	Device 001	Location 001	2016-01-31	100	...





DESKQUERY™ REPORTING

In addition to measuring space and desk utilisation DeskQUERY™ has several in-built attributes that help provide a full end to end space management toolset. DeskQUERY™ utilizes a graphical CAD interface which includes a web-based space management and moves planning system that allows organisations to graphically plan and manage their space portfolio through a web style interface.

The Graphical Interface is highly configurable and scalable and the attributes help organisations plan and manage space-

- Work in conjunction with AutoCAD to create and manage floor plans
- Publish interactive floor plans through a web interface
- Allow distributed users to view floor plans without the need of specialised viewing tools
- Allocate and report on space types and categories, and on space vacancies and ownership
- Allocate cost and cost distribution to space
- Manage occupancy information such as department allocation and staff locations

From a desk utilisation perspective please find the typical floor plan heat map that highlights the desk utilisation in a pre-defined colour coded scheme that shows utilisation in specific bands, e.g. 0.1-20%, 20-40%, 40-60%, 60-80% and 80-100%.

Utilisation can be shown by day for each floor or can be rolled up to give a weekly overview of the utilisation by floor.





ABOUT EXCELREDSTONE

ExcelRedstone is a recognised provider of IT infrastructure and Managed Services Support with over 30 years' experience designing, building optimising and supporting data centres, smart buildings, workplaces and cloud-based solutions. In addition, the company provides many specific solutions for Wi-Fi & IP network connectivity, physical and electronic security, audio-visual systems and office space and occupancy optimisation software.

With over 500 employees and a global capability, ExcelRedstone solutions are deployed in some of the world's largest data centres, intelligent buildings and work spaces. The company has an enviable reputation for best in class service and delivery within the industries they serve, including IT, finance, enterprise and multi-site campuses due to their flexible and agile nature in supporting client contracts.

Contact Us

If you would like to know more about DeskQUERY™, contact our dedicated team today on +44 (0) 20 3929 9915, or email us at deskquery@excelredstone.com